



## SPECIFICATIONS

Type of Product	Cell-C / Cell-P / Cell-F / Cell-S / Cell-A
Model No.	CELL-C-ET1020, CELL-C-EL1020, CELL-C-EC1020 CELL-C-APT1020, CELL-C-APL1020, CELL-C-APC1020 CELL-C-ASL1020, CELL-C-AST1020, CELL-C-ASC1020 CELL-C-RT1020, CELL-C-RL1020, CELL-C-RC1020 CELL-P-PT1020, CELL-P-C1020, CELL-F-LT1020 CELL-F-DK-1020, CELL-S-1020, CELL-A-1020
Avg. length of shielding fabric / wall paper / window film	_____ Meters
No. of Capacitive Matched Loads	_____ Nos
Shielding effectiveness from 800 MHz to 4.0 GHz	80% - 99% radiation level reduction

### PRODUCT MAIN COMPONENTS

	Media	Capacitive Matched Load
<b>Cell-C</b>	Polyester yarn + Shielding yarn	Resistive load encapsulated on a PCB
<b>Cell-P</b>	Paper( or vinyl ) + Polyester yarn + Shielding yarn	Resistive load encapsulated on a PCB
<b>Cell-F</b>	Polyester film + Metal coating	Resistive load encapsulated on a PCB
<b>Cell-S</b>	Polyester film + Copper clading	Resistive load encapsulated on a PCB
<b>Cell-A</b>	Cotton yarn + Shielding yarn	Resistive load encapsulated on a PCB



## HOW TO INSTALL / USE

### **Cell-C**

Now the purpose is very clear that you want to hang both the curtains, your old favorite curtain and our shielding curtain ( CELL-C ), we suggest you to fix 'Double curtain rod' if both the curtains are of ring or eyelet type.

'Double curtain rods' is a standard system readily available in the local market near you. 'Double curtain rods' is an arrangement in which you can hang two different curtains on the same window or door. There are two rods in the same mounting assembly with some space between the two. Fixing 'Double curtain rod' is easier and almost similar to what you do while installing 'Single curtain rod'. People generally go for 'Double curtain rods' for layered curtains.

If the curtains are of American pleats type, then you may have to fix two 'Sliding channels' to hang them as layers.

### **Cell-P**

hang the wall paper ( CELL-P ) on the wall / ceiling in focus through which the seeping radiation was detected.

### **Cell-F**

install the film ( CELL-F ) on the window glass in focus through which the seeping radiation was detected.

### **Cell-S**

While talking, Just keep the shield between you ( your head ) and the cell phone to absorb undesired radiation.

### **Cell-A**

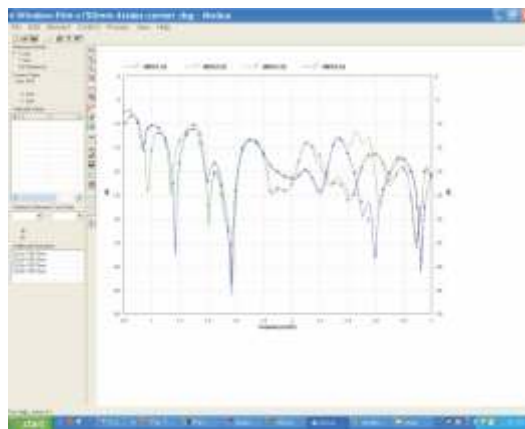
Wear this garment to protect yourself from unwanted Electromagnetic radiation.



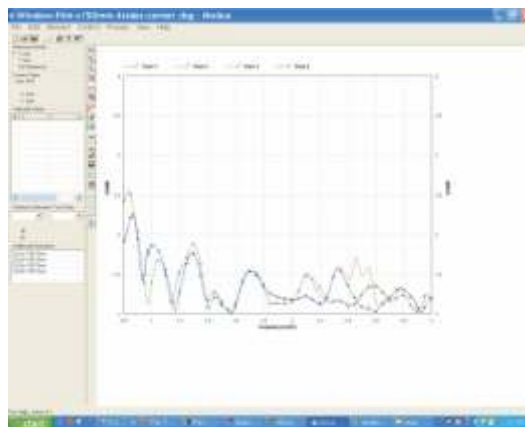
## TECHNOLOGY & OPERATION

All the products mentioned in this manual absorb the radiation impinging on them. Capacitive Matched Loads, developed at IIT BOMBAY, are capacitively coupled and strategically attached at various designated places on the product will convert this absorbed radiation into heat energy. A built-in heat sink in the 'capacitive matched load' will spread this heat and hence no rise in temperature is experienced.

This technology reduces radiation level by 10 dB  
( 90% reduction in the signal) to 20 dB ( 99% reduction in the signal ).



(a)



(b)

Variation of (a) Reflection Co-efficient and  
(b) VSWR at all ports with frequency



# Signal Hawk Electronics Pvt. Ltd

3rd Floor, M.B.-1, Shakarpur, Delhi-110092, Phones: +91-11-30189528, 27, 26, 25  
Web: [www.signalhawk.in](http://www.signalhawk.in) , E-Mail: [info@signalhawk.in](mailto:info@signalhawk.in)